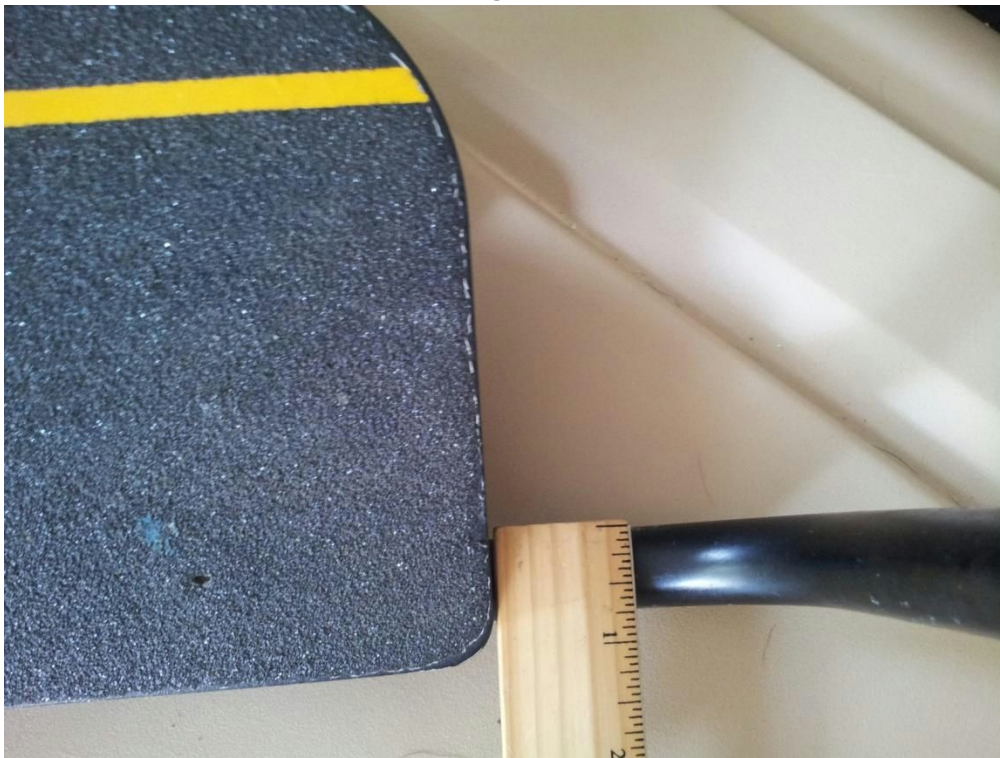


Does Pop n Drop fit my Wheelchair?

Pop n Drop is **not** intended to be used with folding wheelchairs or wheelchairs that have swing away or flip up foot rests. Pop n Drop **is** compatible with rigid wheelchairs that have rigid footrests of the style shown below.

To confirm your wheelchair's compatibility with Pop n Drop, you need to check 3 things:

- 1) Wheelchair footrest tubing needs to be $\frac{3}{4}$ ". TiLite, Quickie and Action all use $\frac{3}{4}$ " standard footrest tubing diameter. See photo that illustrates tubing size measurement.



- 2) Wheelchair footrest width needs to be between 7" and 10".
See photo for footrest width measurement.



- 3) There needs to be 1" or more of horizontal bar on each side of the footrest platform. This is also standard on most

wheelchairs, but this should be checked. See photo.

